

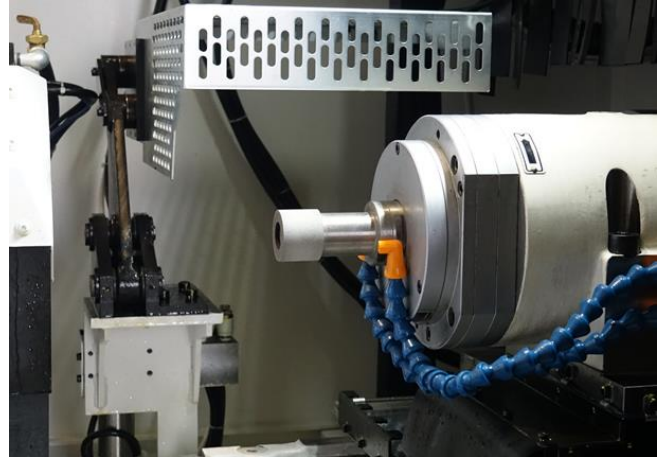
KZTCYCO[®] Grinding Wheel

High density, porous elastic grinding wheel

Performance

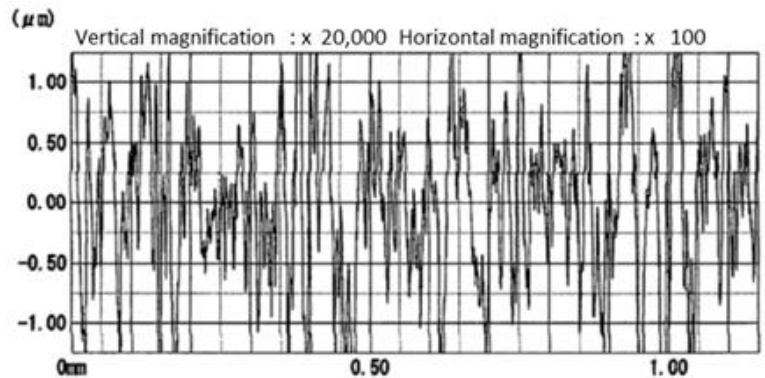
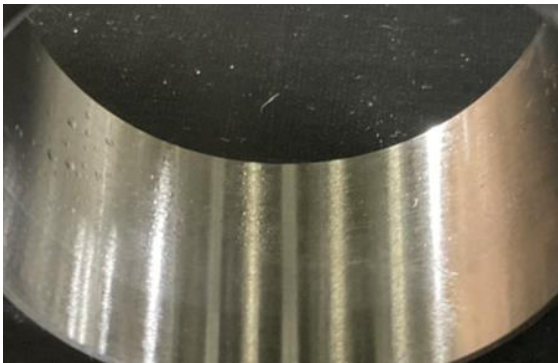
Internal grinder

- ◇ Specification
KZT wheel WA3000
- ◇ Workpiece
100Cr6, HV700
(SUJ2)
- ◇ Vc 25m/s
- ◇ Contact time 180sec



Before grinding

Ra 0.545 μ m Rz 3.866 μ m



After grinding

Ra 0.018 μ m Rz 0.178 μ m

